

ADSL2+

Ethernet Modem

NetVito 5300 Series

Bridge Modem
PPPoE Modem
Router



Quick-Start Guide

Before you begin

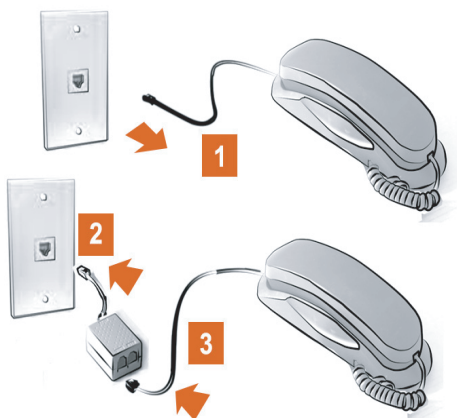
Verify that the following items came with your DSL kit:



1. ADSL modem
2. User guide
3. Power adapter
4. RJ45 Straight-through Ethernet cable
5. RJ11 DSL cable (phone cord)

Your service provider may include an Ethernet adapter, a line filter or a wall-mount filter in your DSL kit. If you need further further assistance, please contact your service provider.

1 Install Line Filters



Stand-alone Line Filter

For each device that shares the DSL phone line:

1. Unplug the device's cord from the phone jack.
2. Plug the filter into the phone jack.
3. Plug the phone cord (or other device cord) into the filter.

Wall-mount Filter

For a wall-mount phone, install a wall-mount filter.

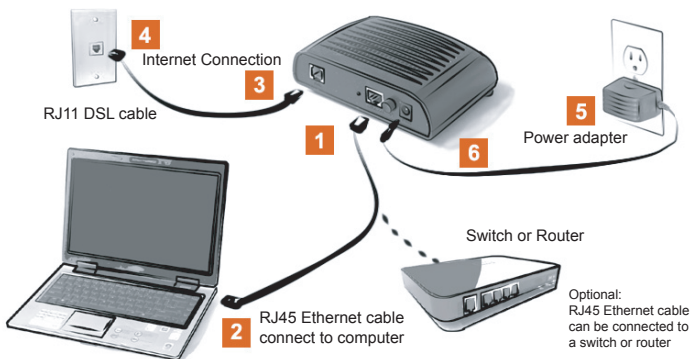
1. Remove the phone.
2. Connect the wall-mount filter to the wall plate.
3. Reconnect the phone.

2 Ethernet Installation

Make sure that your computer has an Ethernet port.

If your computer doesn't have an Ethernet adapter, you need to install an Ethernet adapter with the help of the Ethernet adapter manufacturer's installation instructions.

Connect the ADSL modem



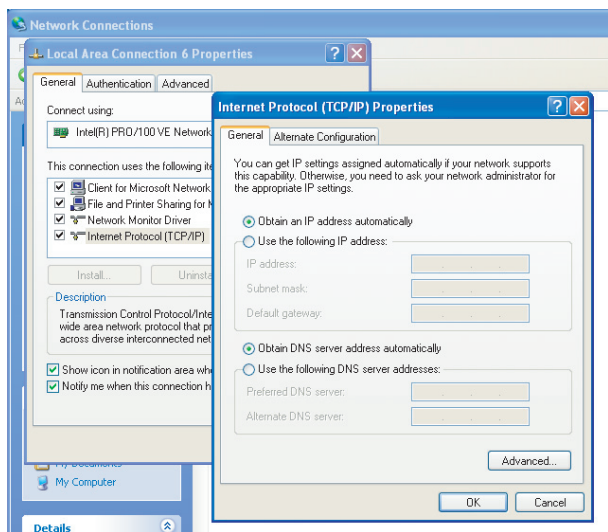
1. Connect the Ethernet cable (RJ45) to the Ethernet port (yellow) on the ADSL modem.
2. Connect the other end of Ethernet cable (RJ45) to the Ethernet port on your computer.
3. Plug the DSL cable (RJ11) into the DSL port (gray) on the ADSL modem.
4. Plug the other end of the DSL cable (RJ11) into the phone jack.
5. Plug the power adapter into the power outlet and the ADSL modem (black port).
6. Power on the ADSL modem (power switch located on right side of back panel).

3 PC Configuration Procedures

Windows Configuration

In order to set up ADSL modem, your PC must first be configured to obtain an IP address from a DHCP server. Follow the procedure below:

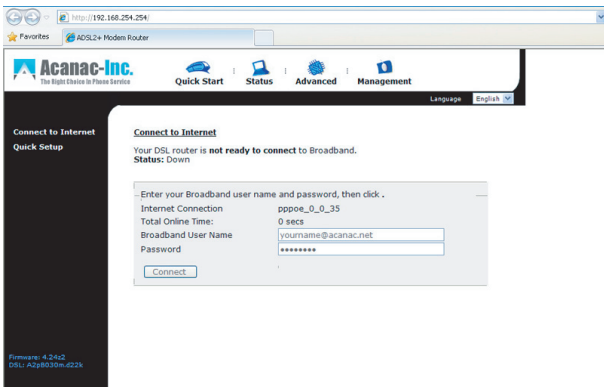
1. Click **Start > Control Panel**.
2. Double-click the **Network Connections** icon.
3. Double-click your **Network Card**.
4. Click **Properties**.
5. Select **Internet Protocol (TCP/IP)**.
6. Click **Properties**.
7. Select **Obtain an IP address automatically**.
8. Select **Obtain DNS server address automatically**.
9. Click OK and exit out of the Control Panel.
10. Configure Internet Access using the procedure that follows.



Internet Access

Router Configuration for your modem comes with PPPoE firmware:

1. Start your Web browser.
In the Address box, enter the following:
192.168.254.254
3. When prompted for a user name and password, type **admin** for the user name and **admin** for the password.
4. Click **OK** to enter the Quick Start page of web interface from modem.
5. Type the user name and password provided by your Internet service provider.
6. If additional configuration is desired, select **Status** to view modem's status and statistical information, select **Advance** to configure DHCP, IPv6 LAN, Virtual Server, Firewall, NAT ALG, QoS and so on, select **Management** to set up modem itself.



Bridge Configuration for your modem comes with PPPoE firmware:

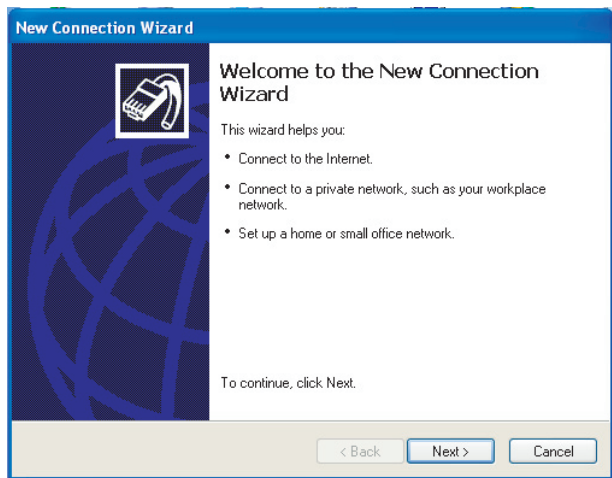
Option 1 - If Advanced page has Bridge mode, simply select it, the modem will automatically change to bridge mode.

Option 2 - Select **Advanced > Internet > Edit**
then choose **Bridging > Next**
and click **Apply /Save**

Bridge Configuration for your modem comes with bridge firmware.

If the modem was configured as bridge, make sure your PC is using the ADSL modem (and not Dial-Up Networking) when connecting to the Internet. Follow the procedure below:

1. Click **Start > Control Panel**.
2. Double-click the **Internet Options** icon.
3. Click the **Connection** tab.
4. Click **Setup**.



5. Click **Next**.

6. Click **Connect** to the Internet.
7. Click **Next**.
8. Click **Next**.
8. Click **Setup my connection manually**.
9. Click **Next**.
10. Select **Connect using a broadband connection that requires a user name and password**.
11. Click **Next** to type in login information from the service provider.
12. Click **Finish**.

Congratulations! You have completed the installation of your ADSL modem.

4 Macintosh Configuration Procedures

Macintosh Configuration

In order to set up the ADSL modem, your computer must first be configured to obtain an IP address from a DHCP server.

Follow the procedure below for OSX:

1. Click **Apple > System Preferences**.
2. Select the **Network** icon under the Internet and Network section.
3. Select **Built-in Ethernet** from the Show drop-down menu.
4. Select **Using DHCP server** from the **Configure IPv4** drop-down menu.
5. Click **Apply** now and exit out of **System Preferences** window.
6. If you have a router, configure the router using the Router Configuration procedure that follows.

Follow the procedure below for OS9:

1. Click **Apple > Control Panels > TCP/IP**.
2. Select **Ethernet** from **Connect** via drop-down menu.
3. Select **Using DHCP server** from the **Configure** drop-down menu.
4. Close window and save changes.
5. If you have a router, configure the router using the Router Configuration procedure that follows.

Router Configuration

1. Start your web browser.
2. In the Address box, enter the following:
192.168.254.254
3. When prompted for a user name and password, type **admin** for the user name and **admin** for the password.
4. Click **OK** to enter the Quick Start page of web interface from modem.
5. Type the user name and password provided by your Internet service provider.
6. If additional configuration is desired, select **Status** to view modem's status and statistical information, select **Advance** to configure DHCP, IPv6 LAN, Virtual Server, Firewall, NAT ALG, QoS and so on, select **Management** to set up modem itself.

The screenshot shows a web browser window with the URL `http://192.168.254.254/`. The browser's address bar and tabs are visible. The page header features the Acanac-Inc. logo and navigation tabs for **Quick Start**, **Status**, **Advanced**, and **Management**. A language dropdown menu is set to **English**. On the left, a sidebar menu lists various configuration options: **Local Network**, **IPv6 LAN Config**, **Layer2 Interface**, **Internet**, **IP Routing**, **Virtual Servers**, **Firewall**, **NAT ALG**, **Quality of Service**, and **Bridge Mode**. The main content area is titled **LAN IP Address Configuration** and includes the instruction: "Configure the DSL Router IP Address and Subnet Mask for LAN interface." Below this, there are input fields for **GroupName** (a dropdown menu), **Primary IP Address** (192.168.254.254), **Subnet Mask** (255.255.255.0), **Host Name** (acanac.net), and **Domain Name** (home). A checkbox labeled "Configure the second IP Address and Subnet Mask for LAN interface" is currently unchecked. At the bottom of the configuration area is an **Apply/Save** button. The footer of the page displays the firmware version: **Firmware: 4.24c2** and the DSL model: **DSL: A2p8030m422k**.

5 Advanced Configuration

In order to use advanced features of modem with router firmware, enter the web interface and select **Advanced**. Select following features to configure:

- Local Network
 - IP address / DHCP Server / UPnP
- IPv6 LAN Config
- Layer2 Interface
 - ATM Interface
- Internet
 - Connections / DNS Server / DSL
- IP Routing
 - Default Gateway / Static Route / IPv6 Static Route
- Virtual Servers
 - Port Forwarding (with remote IP access control) /
Port Triggering / DMA Host / Dynamic DNS /
Static DNS
- Firewall
 - IP Filtering / IPv6 IP Filtering
- NAT ALG
 - VPN ALG / SIP ALG
- Quality of Service
 - Queue Config / QoS Classification
- Bridge Mode
 - One click to setup 0/35 bridge mode,
DHCP will be disabled

6 Management for modem

In order to set up modem features, select Management and use following features:

- Diagnostics
- Access control
- Management Control
 - From Remote / From local
- TR-069 Client
- Internet Time
- System Log
- Backup Config
- Update Firmware
- Reset Router
 - Reset to factory default settings / Reboot only

Modem reset button

Press the reset button on the back of the modem and hold for 5 seconds, the modem will go back to factory default setting.

Modem default settings

IP address: 192.168.254.254

Login user ID: admin

Login password: admin

VPI/VCI = 0/35

Modem supported line modes

G.dmt, G.lite, T1.413, ADSL2, READSL2, ADSL2+ Annex M (disabled by default)

7 Troubleshooting

LED lights can help to find the working status of modem.

| Function | Color | Definition |
|----------------|-----------------------------|---|
| Power | Off | Power not applied |
| | Green | Normal system operation |
| | Red | Self-test in progress |
| | | System is booting |
| | | Self-test failure if red keeps on |
| Blinking Red | Firmware upgrade in process | |
| DSL | Off | No DSL signal is detected |
| | Slow Blinking Green | DSL line handshaking in progress |
| | Fast Blinking Green | DSL line training in progress |
| | Green | DSL line synchronized and ready for traffic |
| Internet (PPP) | Off | No connection to Internet |
| | Green | Internet connection is up |
| | Blinking Green | Internet is up in bridge mode |
| Ethernet | Off | No Ethernet signal is detected |
| | Blinking Green | Data traffic is flowing |
| | Green | Ethernet interface is ready to work |